

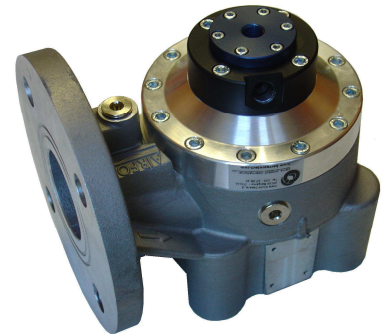


/BASICFOM VALVES

Ideal for use in small silos

Easy to operate

Easy to maintain



The fire valve is equipped with a FOM diaphragm obturator made of elastomer.

Valves that are compact and of reduced dimensions that are suitable in particular for the handling of sands, powders, and other granular material either dry or wet, that are stored in silos and hoppers or for use in points of transit (connecting ducts, transport pipes, etc.).

Operable through solenoid command valve installed on board the machine.

The BASICFOM valves are available in the BASICFOM 90 model: with 90° discharge in relation to the intake coupling.

The activation command may be

- manual
- semi-automatic with external connector
- pre-established frequencies using PLC cyclical programming

Technical Specifications

DN50

Pmax = 10bar

Areas of application

ZF (-10°C, +60°C) → cold zones, up to room temperature

ZC (-10°C, +100°C) → hot zone (ZC area limitations requires a feasibility assessment)

BASICFOM valves are available in the following versions

- ◆ **BASICFOM 90**
Standard model activated using a solenoid connection valve on board the machine
- ◆ **BASICFOM 90 KY**
Model that incorporates the KYOTO partializing device to adjust the effective output of the valve's discharge (from 0 to 8 bar with Pmax=10 bar)
With /PPI Pick-Power-Impulser systems, it is possible to vary the amount of energy delivered from point to point or from section to section according to the specific operational needs



/BASICFOM 90

Item	DN	Max Pressure (PS) bar	Min / Max Temperature (TS) °C	ZF	ZC
600725	50	10	-10 +60	●	
600726	50	10	-10 +100		●



/BASICFOM 90 KY

Item	DN	Max Pressure (PS) bar	Min / Max Temperature (TS) °C	ZF	ZC
600727	100	10	-10 +60	●	
600728	100	10	-10 +100		●



DIMENSIONALS					
MODEL	DN	A mm	B mm	C mm	D mm
BASICFOM 90 DN50	50	187	146	131	15
BASICFOM 90 KY DN50	50	187	209	179	30

