



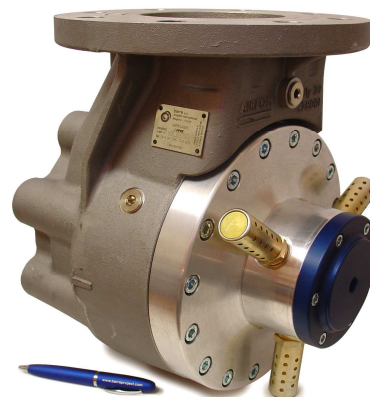
/CRONOFOM VALVES

Valves that are rugged, compact, efficient and highly reliable

Ease of operation

Fast and easy maintenance

Remote operation



The fire valve is equipped with a FOM diaphragm obturator made of elastomer.
Modular structure.

The CRONOFOM valves incorporate the CRONO start device for remote (max 9 metres) operation of the cannon without suffering load losses.

The CRONOFOM valves are divided into two main models as a function of the shape of the valve's body:

◆ **CRONOFOM 90**

Model in which the discharge of the cannon is placed at a 90° with respect to coupling with the intake supply

◆ **CRONOFOM 00**

Model in which the discharge of the cannon is in axis with the intake supply; This model was created specifically to be easily integrated into /PPI Pick-Power-Impulser systems

The activation command may be

- manual
- semi-automatic with external connector
- pre-established frequencies using PLC cyclical programming

Technical Specifications

DN50 / DN100

Pmax = 10bar

Areas of application

ZF (-10°C, +60°C) → cold zones, up to room temperature

ZC (-10°C, +100°C) → hot zone (ZC area limitations requires a feasibility assessment)

N.B. For remote operation further than 9 metres use the LOGOS multi-function valve.



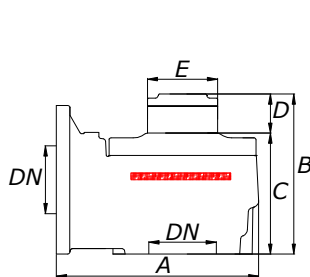
/CRONOFOM 90

Item	DN	Max Pressure (PS) bar	Min / Max Temperature (TS) °C	ZF	ZC
600730	50	10	-10 +60	●	
600732	50	10	-10 +100		●
600738	100	10	-10 +60	●	
600740	100	10	-10 +100		●

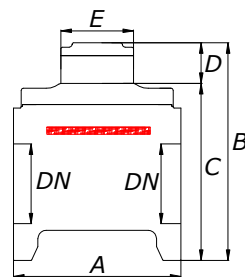


/CRONOFOM 00

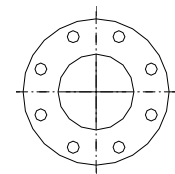
Item	DN	Max Pressure (PS) bar	Min / Max Temperature (TS) °C	ZF	ZC
602060	100	10	-10 +60	●	
602062	100	10	-10 +100		●



/CRONOFOM 90



/CRONOFOM 00



Orientation map

DIMENSIONALS

MODEL	DN	A mm	B mm	C mm	D mm	E mm
CRONOFOM 90 DN50	50	187	178	131	47	74
CRONOFOM 90 DN100	100	300	237	179	58	104
CRONOFOM 00 DN100	100	240	313	255	58	104