



/AIRFOM - KYOTOFOM

Cannons that are rugged, compact, efficient and highly reliable

Cannons with fire valves that are external to the tank.

The fire valve is equipped with a FOM diaphragm obturator made of elastomer.

Unique to the CRONOFOM and KYOTOFOM cannons is the fact of being equipped with a floating diaphragm obturator (FOM) which is extremely lightweight and inserted into a valve body that is robust and very compact. The adoption of FOM obturators has allowed an extreme simplification of the internal structure of these cannons thus significantly reducing the number of components: this makes maintenance quick and easy, with reduced costs.

The KYOTOFOM cannons incorporate both the CRONO start device for remote (max 9 metres) operation of the cannon without suffering load losses and the KYOTO partializing device. KYOTO, when paired with a cannon of the /AIRFOM family, allows not only to contain energy consumption, but also to adjust the effective output of the cannon's discharge (from 0 to 8 bar with Pmax=10 bar).

The KYOTOFOM cannons are divided into two main models as a function of the shape of the valve's body:

◆ **KYOTOFOM 90**

Model in which the discharge of the cannon is placed at a 90° with respect to coupling with the tank

◆ **KYOTOFOM 00**

Model in which the discharge of the cannon is in axis with the tank



Technical Specifications

DN50

P_{max} = 10bar

Areas of application:

ZF (-10°C, +60°C) → cold zones, up to room temperature

ZC (-10°C, +100°C) → hot zone (ZC area limitations requires a feasibility assessment by our Technicians)

N.B. For remote operation further than 9 metres use the /LOGOS multi-function valve.



Energy saving and power management

/KYOTOFOM 90 AIRCANNON

item	DN	Tank lt.	PS bar	TS Min / Max °C	X mm	Y mm	ZF	ZC	HT
230400	50	15	10	-10 +60	637	250	●		
230402	50	30	10	-10 +60	917	250	●		
230410	50	15	10	-10 +100	637	250		●	
230412	50	30	10	-10 +100	917	250		●	
230420	100	50	10	-10 +60	1070	350	●		
230422	100	75	10	-10 +60	1070	400	●		
230424	100	100	10	-10 +60	1270	400	●		
230426	100	150	10	-10 +60	1285	500	●		
230440	100	50	10	-10 +100	1070	350		●	
230442	100	75	10	-10 +100	1070	400		●	
230444	100	100	10	-10 +100	1270	400		●	
230446	100	150	10	-10 +100	1285	500		●	



Energy saving and power management

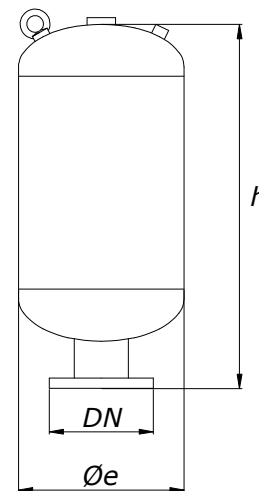
/KYOTOFOM 00 AIRCANNON

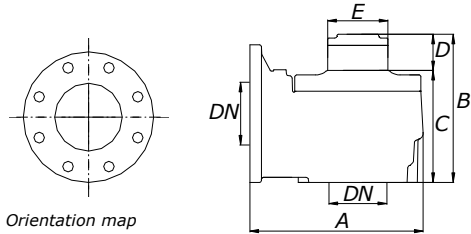
item	DN	Tank lt.	PS bar	TS Min / Max °C	X mm	Y mm	ZF	ZC	HT
235620	100	50	10	-10 +60	1010	350	●		
235622	100	75	10	-10 +60	1010	400	●		
235624	100	100	10	-10 +100	1210	400	●		
235626	100	150	10	-10 +100	1225	500	●		
235630	100	50	10	-10 +100	1010	350		●	
235632	100	75	10	-10 +100	1010	400		●	
235634	100	100	10	-10 +100	1210	400		●	
235636	100	150	10	-10 +100	1225	500		●	



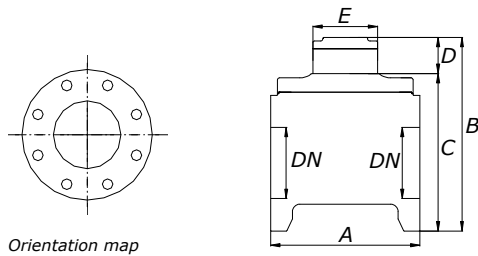
TANKS FOR AIRCANNONS WITH EXTERNAL VALVE (VE)

item	Description	DN	Capacity lt.	Diameter Øe mm	Height h mm
610002	AIRCANNON TANK VE DN50 5 LT	50	5	250	230
610004	AIRCANNON TANK VE DN50 15 LT	50	15	250	450
610006	AIRCANNON TANK VE DN50 30 LT	50	30	250	730
610012	AIRCANNON TANK VE DN100 50 LT	100	50	350	770
610016	AIRCANNON TANK VE DN100 75 LT	100	75	400	770
610021	AIRCANNON TANK VE DN100 100 LT	100	100	400	970
610026	AIRCANNON TANK VE DN100 150 LT	100	150	500	985
610035	AIRCANNON TANK VE DN150 100 LT	150	100	400	970
610038	AIRCANNON TANK VE DN150 150 LT	150	150	500	985





Fire valve /KYOTOFOM 90					
DN mm	A mm	B mm	C mm	D mm	E mm
50	187	193	131	62	74
100	300	249	179	70	104



Fire valve /KYOTOFOM 00					
DN mm	A mm	B mm	C mm	D mm	E mm
100	240	325	255	70	104

TANKS FOR AIRCANNONS WITH EXTERNAL VALVE (VE)			
Volume Lt.	DN	Øe mm	h mm
15	50	250	450
30	50	250	730
50	100	350	770
75	100	400	770
100	100	400	970
100	150	400	970
150	100	500	985
150	150	500	985

