



## **/IANUS VALVES**

### ***Doubling the usage points of the shock-wave***

What makes the IANUS valves particular is that they allow for the automatic feeding and independent firing at two proximate points using a single cannon. Thanks to an internal baffle (180° angle), IANUS directs the cannon generated shock-wave towards two independent outflow pathways that are alternately activated according to the installation requirements. Because of this, IANUS allows for considerable system simplification while reducing clutter compared to the need of a second cannon system within the same area.

Depending on the specific requirements of the system, the activation of IANUS can be

- Manual → manual selection of the outflow route through a special lever or button pneumatic valve
- Semi-automatic → selection of outflow route through external connector
- Automatic → automatic selection of the outflow route through selected cyclic programming

In the event of proximate use the LG01 pneumatic logic management valve, coupled to the machine, greatly simplifies the outflow route exchange operation.

The LG01 valve, connected directly to the IANUS valve (mechanical coupling), is fed through the same point where the cannon is fed: the deflector's change of position is scanned each time the cannon is about to shoot.

In concrete terms, the adoption of IANUS valves on existing systems allows for the doubling of shooting points without any changes in terms of the electro pneumatic connections and without having to introduce additional cannons.

### ***Technical Specifications***

DN100

Pmax = 10bar

### ***Areas of application***

ZF (-10°C, +60°C) → cold zones, up to room temperature

With regard to hot zone application ZC (max 80°C) a feasibility assessment is required.

The IANUS shock-wave diverter valve is available in the following models:

**IANUS 2I** → manual activation

**IANUS 2A** → automatic activation





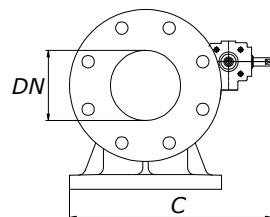
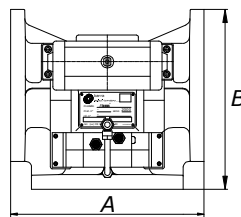
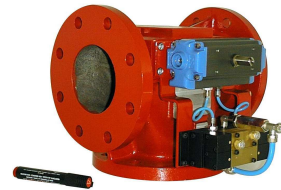
**/IANUS 2I**

| Item   | DN  | Max Pressure (PS)<br>bar | Min / Max Temperature (TS)<br>°C | ZF | ZC |
|--------|-----|--------------------------|----------------------------------|----|----|
| 600185 | 100 | 10                       | -10 +60                          | ●  |    |

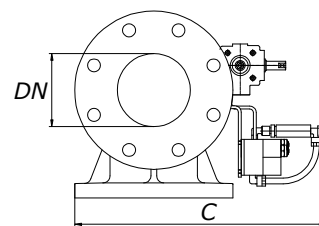


**/IANUS 2A**

| Item   | DN  | Max Pressure (PS)<br>bar | Min / Max Temperature (TS)<br>°C | ZF | ZC |
|--------|-----|--------------------------|----------------------------------|----|----|
| 600190 | 100 | 10                       | -10 +60                          | ●  |    |



/IANUS 2I



/IANUS 2A

**DIMENSIONALS**

| MODEL           | DN<br>mm | A<br>mm | B<br>mm | C<br>mm |
|-----------------|----------|---------|---------|---------|
| <b>IANUS 2I</b> | 100      | 208     | 260     | 294     |
| <b>IANUS 2A</b> | 100      | 208     | 260     | 358     |