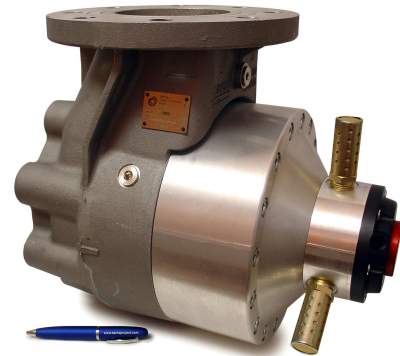




/KYOTOTECH VALVES

*Partializing fire valves
Rugged, compact, efficient and
highly reliable
Fast and easy maintenance
Remote operation*



The fire valve is equipped with a metal alloy obturator.

The KYOTOTECH valves include both the CRONO start device for remote (max 9 metres) operation without suffering load losses and the KYOTO partializing device, which allows not only to contain energy consumption, but also to adjust the effective output force of the discharge (from 0 to 8 bar with Pmax=10 bar).

The simplicity of the internal structure greatly facilitates maintenance tasks because, upon unbolting the inlet section of start valve, you can pull the obturator assembly together as one unit without having to uncouple the valve in use.

The KYOTOTECH valves are divided into two main models as a function of the shape of the valve's body:

◆ **KYOTOTECH 90**

Model in which the discharge of the cannon is placed at a 90° with respect to coupling with the intake supply

◆ **KYOTOTECH 00**

Model in which the discharge of the cannon is in axis with the intake supply. This model was created specifically to be easily integrated into /PPI Pick-Power-Impulser systems

Technical Specifications

DN50 / DN100

Pmax = 10bar

Areas of application

ZF (-10°C, +60°C) → cold zones, up to room temperature

ZC (-10°C, +100°C) → hot zones

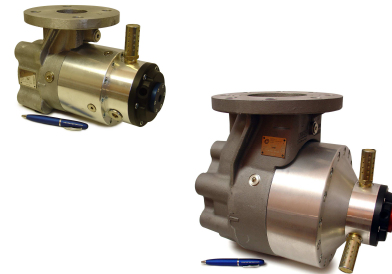
HT (-10°C, +100°C) → high temperature zone Tmax=100°C zone and subject to direct heat radiation and/or pronounced corrosion

N.B. For remote operation further than 9 metres use the LOGOS multi-function valve.

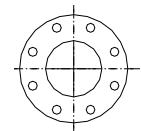
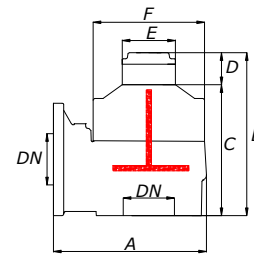


/KYOTOTECH 90

Item	DN	Max Pressure (PS) bar	Min / Max Temperature (TS) °C	ZF	ZC	HT	HTP
600806	50	10	-10 +60	●			
600808	50	10	-10 +100		●		
600810	50	10	-10 +100			●	
600798	100	10	-10 +60	●			
600800	100	10	-10 +100		●		
600802	100	10	-10 +100			●	



DIMENSIONALS							
MODEL	DN	A mm	B mm	C mm	D mm	E mm	F mm
KYOTOTECH 90 DN50	50	187	255	185	70	104	130
KYOTOTECH 90 DN100	100	300	326	256	70	104	218



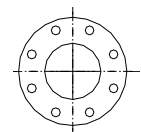
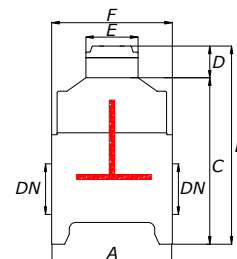
Orientation map

/KYOTOTECH 00

Item	DN	Max Pressure (PS) bar	Min / Max Temperature (TS) °C	ZF	ZC	HT	HTP
602080	100	10	-10 +60	●			
602082	100	10	-10 +100		●		
602084	100	10	-10 +100			●	



DIMENSIONALS							
MODEL	DN	A mm	B mm	C mm	D mm	E mm	F mm
KYOTOTECH 00 DN100	100	240	402	332	70	104	218



Orientation map